



Manufacturers & Exporters of Veterinary Instruments

## ABOUT US

Welcome to Alvi Expo, where quality meets precision.

As a leading provider of veterinary instruments, we are committed to delivering excellence in healthcare

Company With a focus on reliability.

innovation, and customer satisfaction, we pride ourselves on being your trusted partner in the field

# ANIMAL HEALTH

## VETERINARY SURGICAL

### &

## DENTAL INSTRUMENTS

## CATALOGUE

**AV-001**

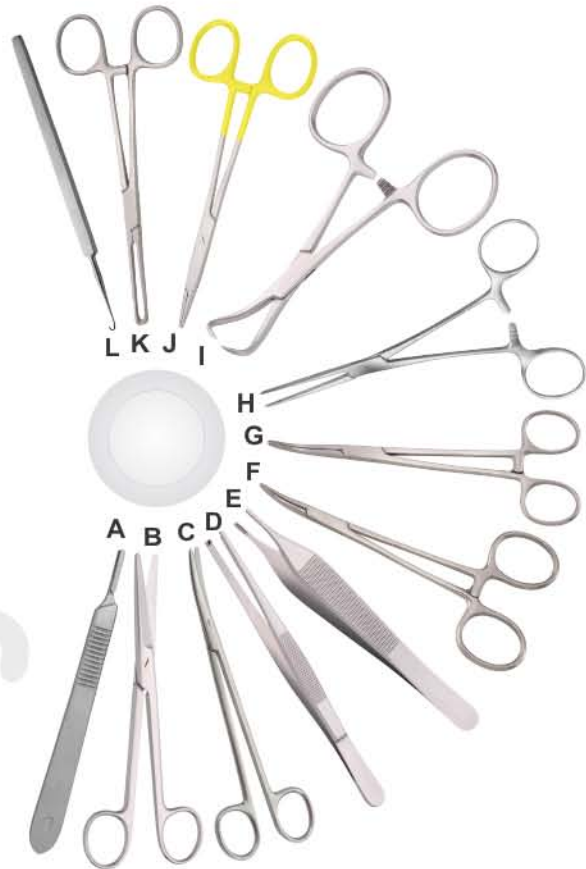
**CANINE SPAY SET**

- A #3 Knife Handle
- B Mayo Scissors Straight 6-3/4"
- C Metzenbaum Scissors 7" Curved
- D Tissue Forceps 5-1/2", 1x2 Teeth
- E Brown Adson Forceps 4 3/4", 7x7 Teeth
- F Halsted Mosquito Forceps 5" Curved
- G Kelly Forceps 5-1/2" Curved
- H Roch-Carmalt Forceps 6-1/4" Cvd. + Str.
- I Backhaus Towel Clamp 3-1/2"
- J TC Olsen Hegar Needle Holder 6-1/2" TC
- K Allis Tissue Fcp 4x5 Teeth 6"
- L Snook Ovariectomy Hook

**AV-002**

**FELINE SPAY SET**

- A #3 Knife Handle
- B Mayo Scissors Straight 6-3/4"
- C Metzenbaum Scissors 7" Curved
- D Tissue Forceps 5-1/2", 1x2 Teeth
- E Brown Adson Forceps 4 3/4", 7x7 Teeth
- F Halsted Mosquito Forceps 5" Curved
- G Kelly Forceps 5-1/2" Curved
- H Roch-Carmalt Forceps 6-1/4" Curved
- I Backhaus Towel Clamp 3-1/2"
- J TC Olsen Hegar Needle Holder 5-1/2" TC
- K Allis Tissue Fcp 4x5 Teeth 6"
- L Snook Ovariectomy Hook



**AV-003**

**GENERAL SURGERY SET**

- A #3 Knife Handle
- B Mayo Scissors Straight 6-3/4"
- C Metzenbaum Scissors 7" Curved
- D Tissue Forceps 5-1/2", 1x2 Teeth
- E Brown Adson Forceps 4 3/4", 7x7 Teeth
- F Halsted Mosquito Forceps 5" Curved
- G Kelly Forceps 5-1/2" Curved
- H Roch-Carmalt Forceps 6-1/4" Curved
- I Backhaus Towel Clamp 3-1/2"
- J TC Olsen Hegar Needle Holder 5-1/2" TC
- K Snook Ovariectomy Hook
- L Allis Tissue Forceps 6", 5 X 6 Teeth
- M Sen Retractor
- N Suture Scissors, 8", sharp-Blunt



**AV-004**

Exotic Animal Surgical Kit

Kit includes:

- (1) Scissors, Surgical, 5.5"
- (1) Instrument Case, Sterilizing Boxes (with silicon Pads)50x152mm
- (1) Retractor, ALM Self-Retaining
- (1) Forceps, Dressing 12.5 cm straight
- (1) Scissors, Iris, 11 cm, straight tungsten carbide blades
- (1) Needle Holder, Olsen Hegar, with suture scissors
- (1) #3 Scalpel handle
- (1) Forceps, Micro Adson 12 cm
- (2) Forceps, Mosquito 3.5" curved
- (2) Forceps, Hartman Mosquito 3.5"



**AV-005**

Mouse Vessel Cannulation Kit

- Instrument Case, Sterilizing Boxes (with silicon Pads)50x152mm
- Dumont Tweezers #5
- Vannas Scissors
- Alm Self-Retaining Retractor
- Fine, Serrated Forceps
- MicroFil, 28 gauge
- Vessel Cannulation Forceps, 0.5 mm Diameter



**AV-006**

General Surgery Basic Kit  
Kit includes:

- (1) #3 Scalpel handle
- (1) Mayo scissors, 6.75", straight
- (1) Snook ovariotomy, 7"
- (3) Mosquito hemostatic forceps, 5", curv
- (2) Kelly hemostatic forceps, 5.5", straigh
- (1) Metzenbaum scissors, curved, 7"
- (1) Brown-Adson forceps, 7x7 teeth
- (4) Rochester Carmalt forceps, 6.25", curv
- (4) Backhaus towel clamps, 5.25"
- (1) Olsen Hegar needle holders, 5.5"
- (1) Sterilization case



**AV-007**

Rat Dissecting Kit

- Dumont Tweezers #5
- Alm Self Retaining Retractor
- Vannas Scissors
- Needle Holder
- Iris Forceps, Curved, Serrated
- Blunt Probe, 1.0 mm Diameter
- SuperCut Iris Scissors, Straight, 10 cm



**AV-008**

Feline Spay Pack  
Kit includes:

- (2) Kelly forceps, 5.5", curved
- (2) Kelly hemostatic forceps, 5.5", straight
- (2) Mosquito hemostatic forceps, 5", curved
- (2) Mosquito forceps, 5", straight
- (3) Jones towel clamp, 3.5"
- (1) Dressing forceps, 5.5"
- (1) #3 Scalpel handle
- (1) Adson Brown forceps, 4.75"
- (1) Mayo scissors, 6.75", straight
- (1) Mayo-Hegar needle holder, 6.75"
- (1) Olsen-Hegar needle holder, 6.5"
- (1) Snook ovariotomy, 7"



**AV-009**

Micro-surgical Kit  
Kit includes:

- (1) Tweezers, Dumont #5, 11cm non-magnetic stainless steel
- (1) Scissors, Spring, 14 cm curved
- (1) Needle Holder, Castroviejo 14 cm
- (1) Scissors, Tenotomy, 10 cm straight
- (1) Instrument Tray, autoclavable
- (2) Forceps, Micro Hemostatic, 12.5 cm, curved
- (1) Knife Handle, Round Knurled
- (1) Blades, Miniature Edge 12-pack
- (1) Probe, 14 cm, stainless steel (not pictured)
- (1) Retractor, Weitlaner, 10.8 cm



**AV-010**

Mouse Dissecting Kit

- Dumont Tweezers #5
- Wire Retractor
- Vannas Scissors
- Needle Holder
- Iris Forceps, Curved, Serrated
- Blunt Probe, 1.0 mm Diameter
- Dissecting Scissors, 10 cm, Straight
- Small Surgical Instrument Storage Portfolio



**AV-011**

Student Botanical Kit

- 1 Scissors, 14cm
- 1 Dropper
- 1 Scalpel Handle #3
- 4 Scalpel Blades
- 1 Teaser Needle, Angled
- 1 Teaser Needle, Straight
- 1 Mariam Tweezers, Angled
- 1 Tweezers, Straight
- 1 Instrument Storage Portfolio





**AV-013**

Entomology Kit for Students

Kit Contains:

- 2 Teaser Needles, Straight
- 2 Teaser Needles, Angled
- 1 Iris Scissors, 11.5 cm
- 1 Scalpel Handle #3
- 1 Adson Micro Forceps, 12 cm
- 1 Dropper
- 2 Micro Dissection Forceps, 12 cm, Straight
- 2 Micro Dissection Forceps, 12 cm, Curved
- 2 Entomology Forceps, 10 cm
- 1 Tweezers with Magnifying Mirror
- 1 Stainless Steel Ruler, 6"
- 10 Blades #10
- 1 Instrument Storage Portfolio



**AV-014**

Dissection Kit for Students

Kit Contains:

- 1 Scalpel Handle #3
- 1 Scalpel Handle #4
- 1 Dressing Forceps, 16 cm
- 1 Mayo Hager Needle Holder, 16 cm
- 1 Teaser Needle, Angled
- 1 Teaser Needle, Straight
- 1 Hooks with Chain
- 1 Tissue Forceps, 1:2, 16 cm
- 1 Dissecting Scissors, 16 cm, Sharp/Blu
- 1 Kelly Forceps, 14 cm, Straight
- 1 Dropper
- 1 Stainless Steel Ruler, 6"
- 1 Grooved Director, Plain
- 1 Adson Tissue Forceps, 12 cm
- 4 Blades for Scalpel Handle #4
- 4 Blades for Scalpel Handle #3
- 1 Surgical Instrument Portfolio



**AV-015**

Veterinary Periodontal Surgery Basic Kit  
Kit includes:

- (1) 503413 - Mirror, Cone socket
- (1) 503414 - Double end explorer
- (1) 503415 - Periodontal pr
- (1) 500236 - #3 Scalpel har
- (1) 503417 - 1 Ochsenbein
- (1) 503419 - Kirkland gum l
- (1) 503420 - Orban scaler
- (1) 503421 - Jacquette scal
- (1) 503422 - Gracey curette
- (1) 503423 - Scaler, double
- (1) 503424 - Gracey curette
- (1) 503406 - Periosteal elev



**AV-016**

Student Veterinary Kit

- Dissecting scissors, 4.5"
- Dissecting scissors, 4"
- Dressing forceps, 5.5"
- Micro dressing forceps, 4"
- #4 Knife handle
- Straight teasing needle
- Angled teasing needle
- #22 Surgical blade
- Canvas roll-up



**AV-017**

Sterilization Mesh Cassette,  
4 x 4 x 2 cm (1.5 x 1.5 x .75")



**AV-018**

Sterilization Mesh Cassette,  
8 x 8 x 3.4 cm (3.1 x 3.1 x 1.4")



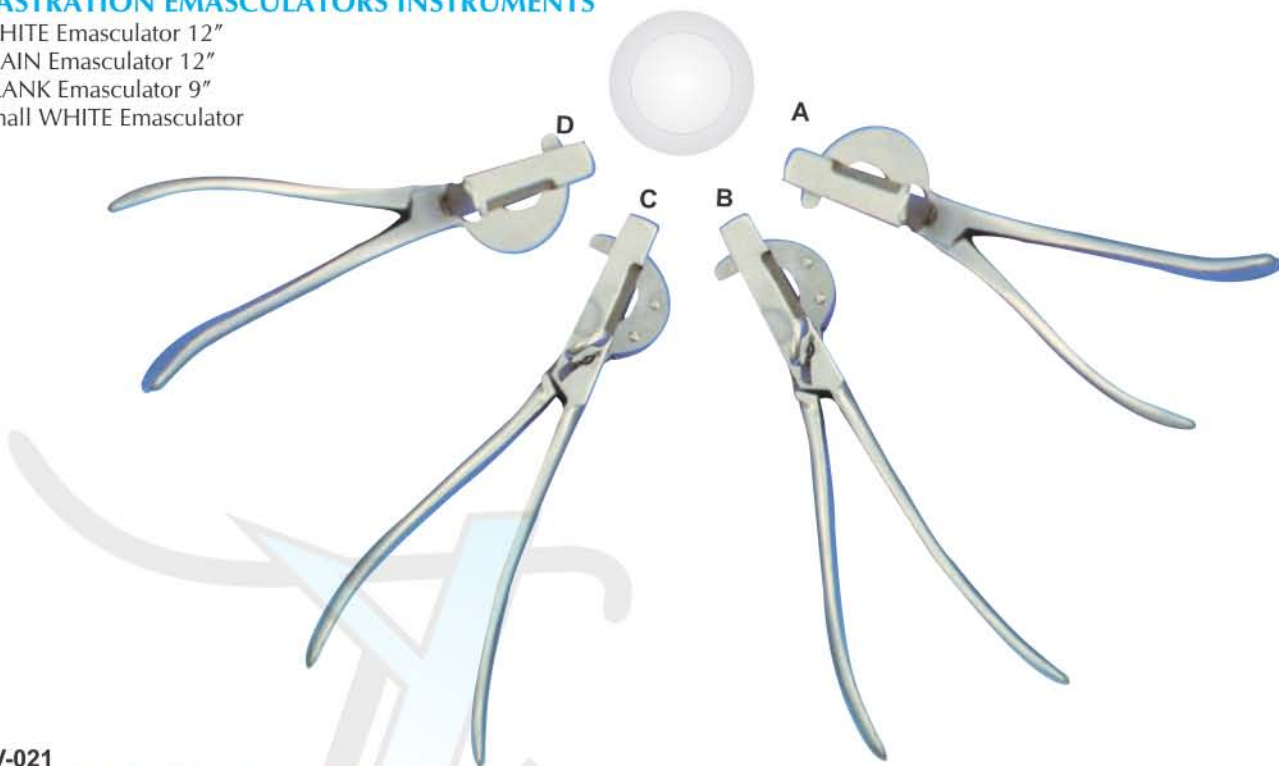
**AV-019**

Sterilization Mesh Cassette,  
10.5 x 7 x 2.5 cm (4.1 x 2.75 x 1")

**AV-020**

**CASTRATION EMASCULATORS INSTRUMENTS**

- A WHITE Emasculator 12"
- B PLAIN Emasculator 12"
- C FRANK Emasculator 9"
- D Small WHITE Emasculator



**AV-021**

**STANDARD VETERINARY EYE SET**

- A #3 Scalpel Handle
- B Wire Eye Speculum
- C Eye Dressing Forceps 4"
- D Chalzion Forceps
- E Stevens Tenotomy Scissors 4-1/8"
- F Castroviejo Needle Holder 5-1/2" Str.
- G Bishop-harman, Toothed Forceps
- H Baby Olsen-hegar N/Holder Tc Tip
- I Desmarres Retractor



**AV-022**

**STANDARD VETERINARY ORTHOPEDIC INSTRUMENT SET**

- A** Wire Cutter
- B** Senn Retractor Blunt 6 3/8" (16.2cm), blunt prongs, double end
- C** Senn Retractor Sharp 6 3/8" (16.2cm), sharp prongs, double end
- D** Weitlaner Retractor 5 1/4" (13cm)
- E** Freer Elevator 7" (17.8cm) double end, sharp and blunt blades
- F** Bone Curette
- G** Mallet
- H** Bone File
- I** Wire twister 6" (15.2) with Carb-N-Sert jaws
- J** Kern Bone Holding Forceps Small 6 1/2" (15.2cm), with ratchet
- K** Kern Bone Holding Forceps Large 9 1/2" (24.1cm), with ratchet
- L** Bone Cutting Forceps
- M** Pin Cutter
- N** Osteotome



**AV-023**

**SPECULA**

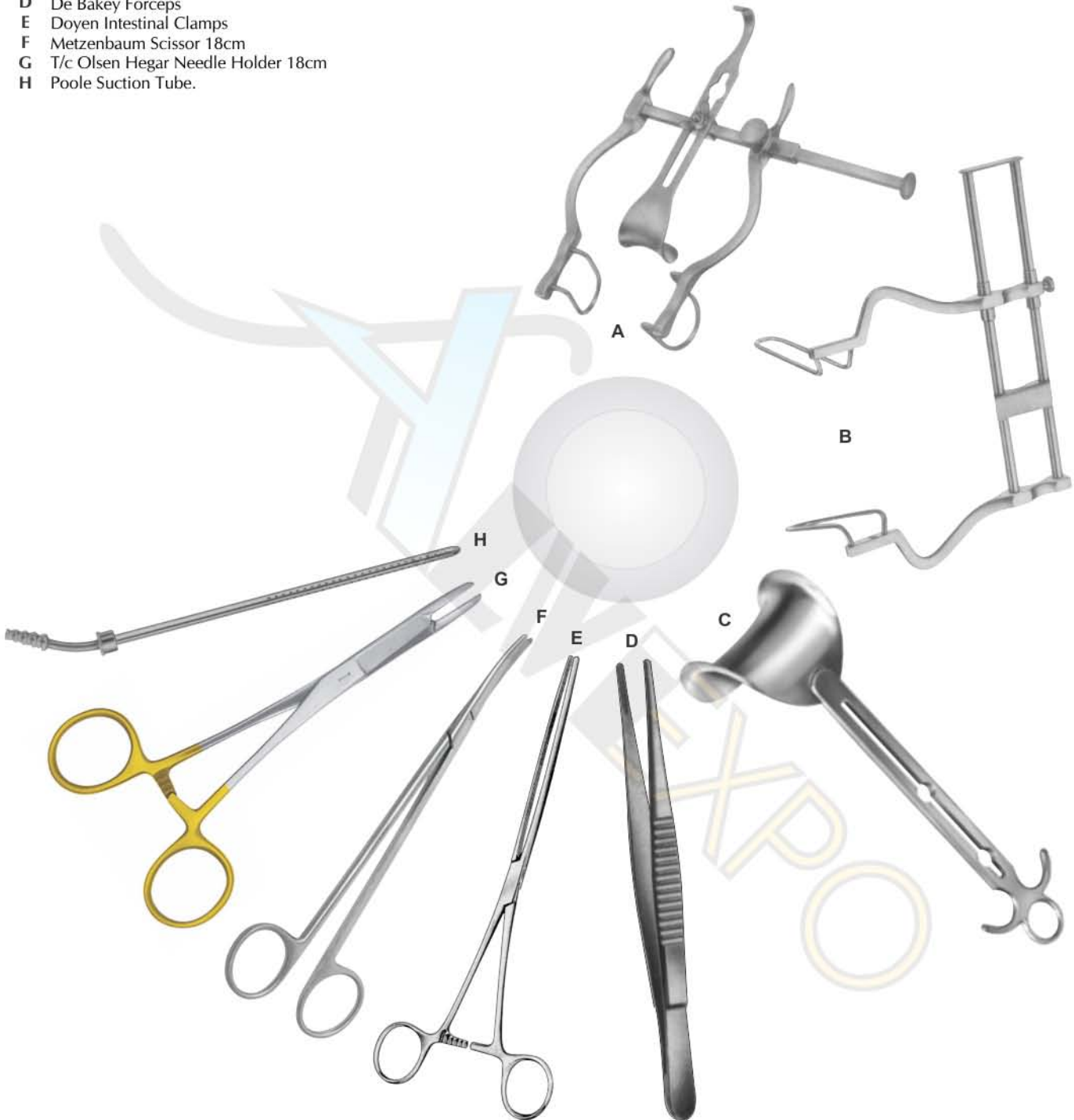
- A VIENNA Nasal Speculum, 5-3/4" (14.6cm), standard pattern, 1-1/8" (2.8cm) blades
- B VIENNA Nasal Speculum, 5-3/4" (14.6cm), standard pattern, 1-1/8" (2.8cm) blades (Vantage Brand)
- C VIENNA Nasal Speculum, 5-3/4" (14.6cm), light pattern, 1-1/8" (2.8cm) blades
- D KILLIAN Speculum, 6" (15.2cm), with set screw, 3-1/2" (8.9cm) blades
- E GRAVES Vaginal Speculum, 3-3/4" (14.6cm), small
- F GRAVES Vaginal Speculum, 3-3/4" (14.6cm), small (Vantage Brand)



**AV-024**

**ABDOMINAL PACK SET**

- A Balfour Retractor
- B Baby Balfour Retractor
- C Central Blade Only
- D De Bakey Forceps
- E Doyen Intestinal Clamps
- F Metzenbaum Scissor 18cm
- G T/c Olsen Hegar Needle Holder 18cm
- H Poole Suction Tube.



AV-025

**NEUTER PACK SET**

- A Halstead Mosquito 12cm
- B Crile Wood N/holder Tc
- C Allis Tissue Forceps
- D Backhaus Towel Clips
- E Olsen-Hegar N/Holder
- F Metzenbaum Scissors
- G Adson Tissue Forceps
- H Scalpel Handle No.3 with scale



AV-026

**CRUCIATE PACK SET**

- A Baby Gelpi
- B Martin Cartilage Forceps
- C Deschamps Needle right small or large
- D Smilie Menisectomy Knife
- E Mini-Hohlmann
- F Hohmann Retractor



AV-027

**CRUCIATE PACKS SET**

- A Knife Handle, 10cm
- B Mayo Scissor 6.75" straight
- C Roger Wire Cutting Scissor 4.75"
- D Frazier Suction 10fr
- E Halsted-Mosquito Forceps 5" straight
- F Halsted Mosquito Forceps 5" curved
- G Crile Forceps 5.5" straight
- H Adson-Brown Forceps 4.75"
- I Olsen-Hegar Needle Holder 6.5"
- J Senn Retractor 6.25" (3 sharp prongs)
- K Mini Hohmann Retractor 6mm
- L Lempert Rongeur 6.5" curved
- M Wire Cutter T.C 14cm
- N Complete Hand Chuck Pin 3/32" smooth
- O Crimping Device
- P Tensioning Device
- Q Crimp Tubes
- R Cruciate Needles (set of 3 sizes) 80#
- S Monofilament Nylon Suture
- T Tray, Stainless Perforated



**AV-028**

**VETERINARY EXTRACTION BASIC SET-**

- A #3 Scalpel Handle
- B Baby molt Periosteal Elevator
- C Extracting Forceps
- D Universal, mini, La Grange Scissors 4 1/4"
- E Olsen-Hegar Needle Holder Combined suture scissors 5 1/2"
- F Brown- Adson Tissue Forceps, 4 3/4"
- G Operating Scissors Straight 5 1/2"
- H Luxating Elevator Straight & Curved 2mm
- I Luxating Elevator Straight & Curved 3mm
- J Luxating Elevator Straight & Curved 5mm



**AV-029**

**SPAYING & TEAT INSTRUMENTS**

- A COVAULT Ovariectomy Hook with probe tip, 8-1/4"
- B SNOOK Ovariectomy Hook, 8"
- C SNOOK Ovariectomy Hook, 8"
- D UDALL Teat Bistouri, 6-1/4", blunt
- E LICHTY Teat Knife, 5-1/2", sharp point
- F LICHTY Teat Knife, 5-1/2", blunt end
- G CORNELL Teat Curette, 6-1/4"
- H BOWER Obstetrical Forceps, 9-1/2", Straight, serrated jaws
- I BOWER Obstetrical Forceps, 9-1/2", curved, serrated jaws



**AV-030**

**CANINE PERIODONTAL SET**

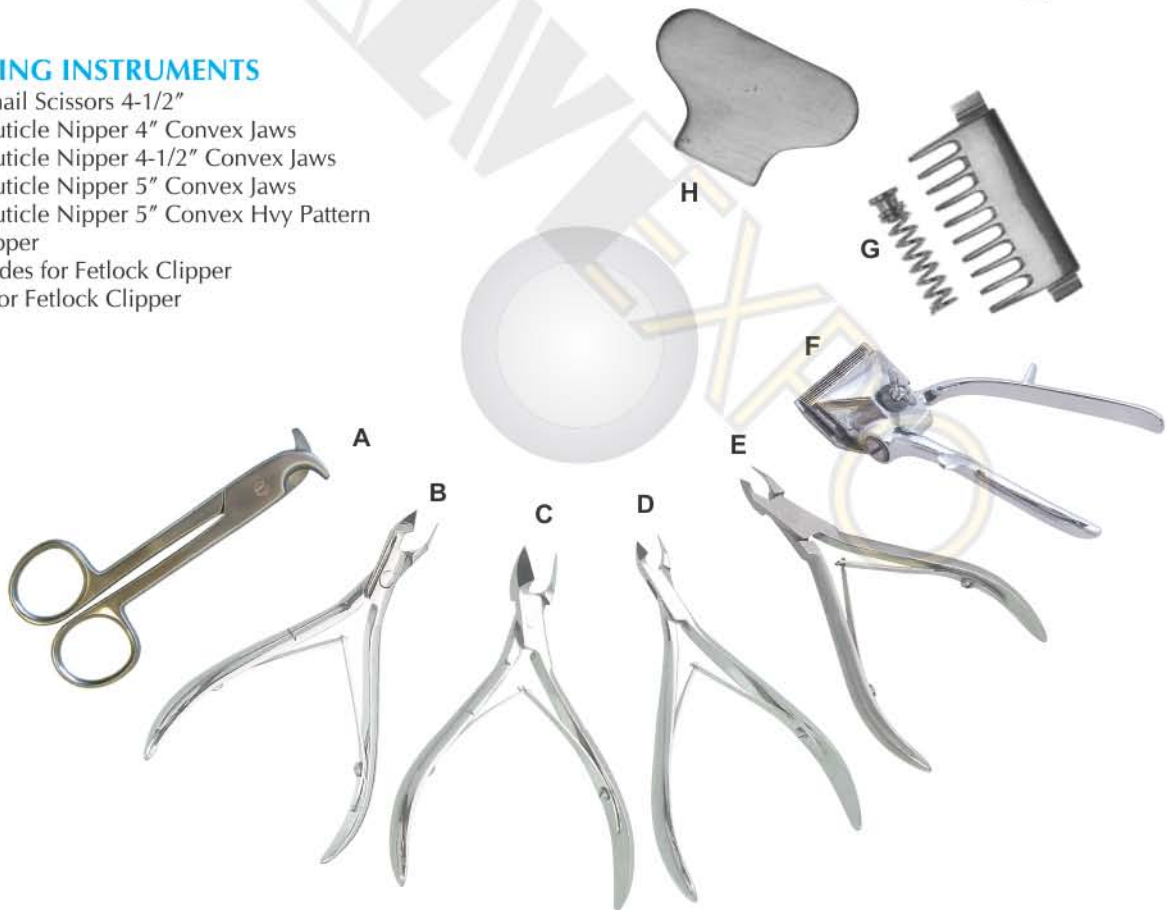
- A Mirror Handle Cone Socket
- B Mirror #4
- C Explorer 2
- D Probe 20-23 Explorer
- E Curette Columbia 13-14 Fine
- F Curette Columbia 4L-4R
- G Snook Ovariectomy Hook



**AV-031**

**GROOMING INSTRUMENTS**

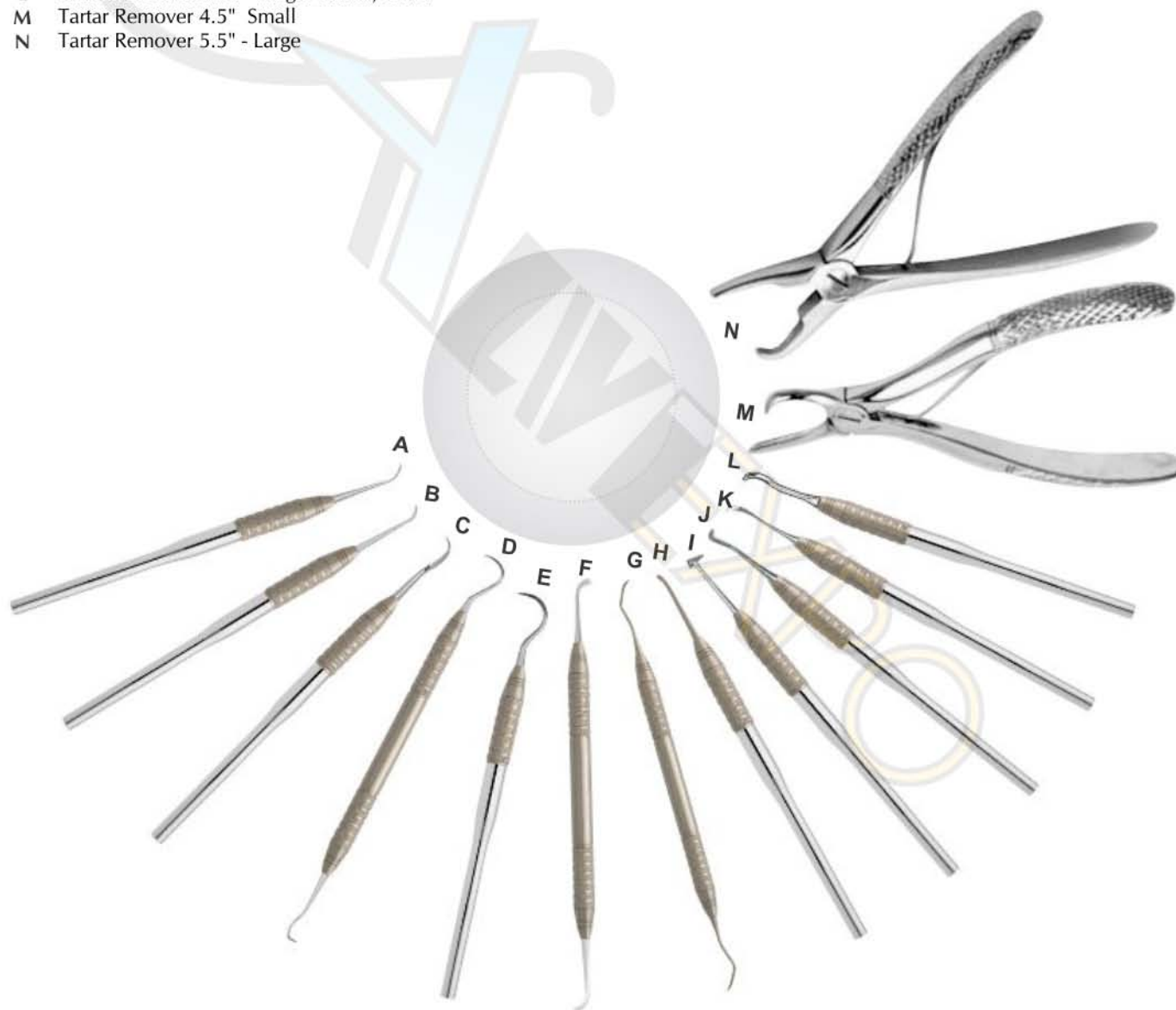
- A White Toenail Scissors 4-1/2"
- B Tissue & Cuticle Nipper 4" Convex Jaws
- C Tissue & Cuticle Nipper 4-1/2" Convex Jaws
- D Tissue & Cuticle Nipper 5" Convex Jaws
- E Tissue & Cuticle Nipper 5" Convex Hvy Pattern
- F Fetlock Clipper
- G Set of 2 Blades for Fetlock Clipper
- H Wing Nut for Fetlock Clipper



**AV-032**

**CANINE & FELINE TARTAR SCRAPERS**

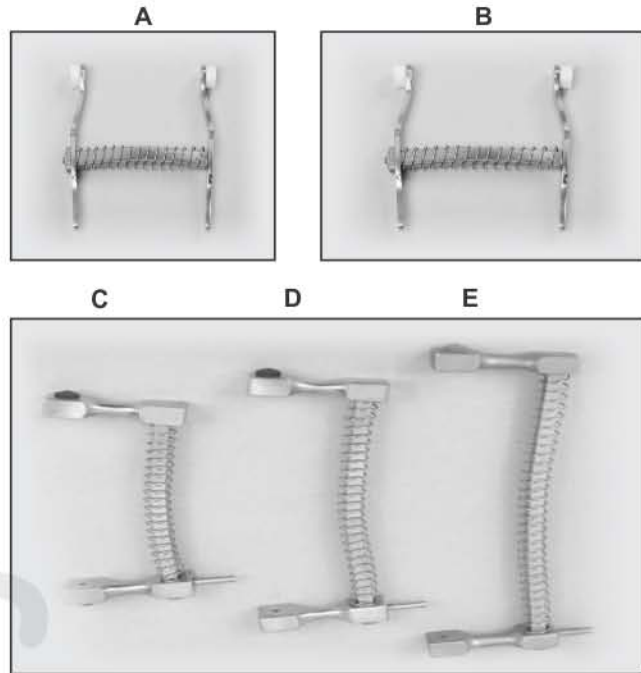
- A Canine & Feline Tartar Scrapers Claw Type
- B Canine & Feline Tartar Scrapers Curved w Straight Edge
- C Canine & Feline Tartar Scrapers Angular, Pointed
- D Canine & Feline Tartar Scrapers Triangular
- E Canine & Feline Tartar Scrapers Curved w Angled Edge
- F Canine & Feline Tartar Scraper DE, Cvd w Angled Edges
- G Universal Scaler #12 - Double Ended, Solid
- H Towner Scaler #15 - Single Ended, Solid
- I Towner Scaler #15/33 - Double Ended, Solid
- J Universal Scaler #3 - Single Ended, Solid
- K Universal Scaler #33 - Single Ended, Solid
- L Universal Scaler #34 - Single Ended, Solid
- M Tartar Remover 4.5" Small
- N Tartar Remover 5.5" - Large



**AV-033**

**RESTRAINT INSTRUMENTS**

- A Petite Mouth Gag 2-1/4" Lightweight
- B Feline Mouth Gag 3" Lightweight
- C Canine Mouth Gag 4" Small Size
- D Canine Mouth Gag 4" Medium Size
- E Canine Mouth Gag 6-3/4" Large Size



**AV-034**

**VETERINARY PERIODONTAL BASIC KIT -MEDICAN**

- A Mirror Handle Complete
- B Probe/Explorer CP 12/23
- C Tower-Jaquette Scaler
- D Gracey Anterior Curette
- E Gracey Posterior Curette
- F Columbia Curette
- G Large Surgical Elevator
- H Small Surgical Elevator
- I Extra Surgical Elevator



CURETTES, SCALERS & PROBES



AV-035 Jacquette Scaler #1S/1S (33/33) Solid



AV-036 Jacquette Scaler #2S/3S (34/35) - Solid



AV-037 Jacquette Scaler #2/3 (31/32) - Solid



AV-038 Gracey Curette #11/12 - Solid



AV-039 Gracey Curette #13/14 - Solid



AV-040 Columbia Curette #13/14 - Solid Handle



AV-041 McCall Curette #13/14 - Solid



AV-042 Goldman-Fox Probe - Flat, Single Ended



AV-043 Expro #23/Williams



AV-044 Williams Probe



AV-045 Williams/Fox Probe - Double Ended



AV-046 Holmstrom Plugger/Spreader #90 - 45mm

AV-047

**DENTAL PACK SET**

- A Winged Elevators
- B Dental Extracting Forceps
- C Root Elevator 76N
- D Explorer D/E
- E Curettes Columbia 13-14
- F Curettes Columbia 4L-4R
- G Scaler, Jacquette 2S-3S
- H Periosteal Elevator
- I T/c N/Holder



AV-048

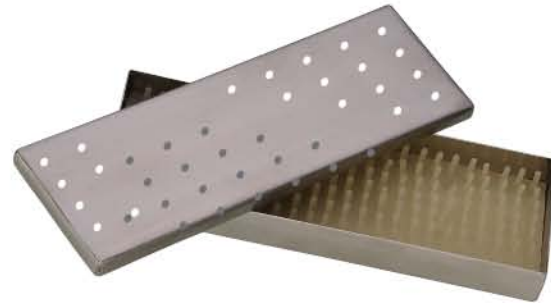
**RODENT PACK SET**

- A Mouth Gag
- B Check Retractors
- C Tooth Cutter
- D Tooth Extracting Forceps
- E Spatula
- F Molar Luxator 3mm
- G Incisor Luxator 5mm
- H Currettes



Veterinary Winged Dental Elevators

Alvi winged elevators are light-weight yet extremely durable. The sharp, tapered winged tip allows easy insertion into the PDL. The width of the winged tips have been shaped to match the size and shape of the tooth's root structure (sizes 1-6 mm). This unique winged shape increases control of the instrument and provides additional leverage to aid in extraction of the tooth.



**AV-049**

Alvi Winged Elevators with Standard Handle

Winged Elevator 1mm



Winged Elevator 2mm



Winged Elevator 3mm



Winged Elevator 4mm



Winged Elevator 5mm



Winged Elevator 6mm



**Straight Root Tip Pick**

Used for assisting with extraction of retained root tips or root fragments.  
Straight Root tip pick - stubby handle



**Periosteal Elevator**

Used for elevating the muco-periosteal flap during extractions on large breed dogs.  
Periosteal Elevator - stubby handle



Alvi Winged Elevators with Stubby Handle

The stubby handle elevators available as a 6 pc. set. See page 16

Winged Elevator 1mm



Winged Elevator 2mm



Winged Elevator 3mm



Winged Elevator 4mm



Winged Elevator 5mm

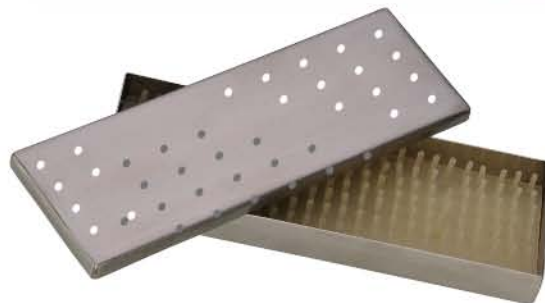


Winged Elevator 6mm



**AV-050**

6 pc Stubby Handle Set includes stainless steel instrument holder/case



**AV-051 5pc Luxator instrument set (1-5mm Stubby)**

1mm Luxator (Stubby Handle)



2mm Luxator (Stubby Handle)



3mm Luxator (Stubby Handle)



4mm Luxator (Stubby Handle)



5mm Luxator (Stubby Handle)



**Alvi Luxators**

Alvi Luxators, sizes 1-5mm are very fine and sharp. The 5 sizes allow their use for both feline and Canine teeth. They are used and recommended by dental specialist's for cutting the periodontal ligament and expanding the alveolus (tooth Socket) and are ideal for incisors and crowded teeth.

The stubby (shorter length and larger diameter) handle makes extraction so much safer as the users fingers can be placed at the instrument tip. Luxators are not elevators, we recommend winged elevators are used to elevate and extract the tooth.



**AV-052**

**Explorer/Measuring Probe**

The probe end has periodontal markings etched in black. The fine but robust tip is ideal for periodontal probing in cats or dogs. The markings will not fade even after many autoclave cycles. The other end of the probe has a shepherd hook explorer to detect tooth defects both supra and subgingivally.



**AV-053**

**Double Ended Periosteal Elevator**

The periosteal elevator is used to lift a muco-periosteal flap off the bone when performing surgical extractions. The fine double-ended 2/4 periosteal elevator is great for cats and small to medium dogs.



**AV-054**

**Sickle Scaler**

This scaler is used to remove plaque and calculus from the tooth surface. The sickle scaler tip can be used to remove calculus from the developmental grooves and blood grooves in canine teeth.



**AV-055**

**Jaquette Supragingival Scaler**

(Above the gum) The scaler is used to remove plaque and calculus from the tooth surface. It works well in tight occlusal spaces.



**AV-056**

**Subgingival Curette**

(Below the gum) The curette is used to clean plaque and calculus from the tooth root surface.



**AV-057**

**Minnesota Retractor**

Used to lift and protect the tissue and the user when performing surgical extractions whilst operating the high speed drill. One end holds the cheek back and the other holds the tongue down, a multi purpose retractor.



**AV-058**

**Tartar Removing Forceps**

The curved beak of the forceps allow for easy removal of heavy calculus from the tooth surface, decreasing the chance of fracturing the tooth.



**AV-059**

**Extraction Forceps**

Extraction forceps are used to grasp the tooth and remove from the socket after it is loosened. The small size and spring in the handle helps prevent excessive force and the risk of breaking the tooth. Overall length 125mm (5").



**AV-060**

**Root Tip Extraction Forceps**

Root tip extraction forceps have grooved tips with fine curved ends that meet when closed. They are ideal for root extraction or as an alternative to regular extraction forceps (D1012). 6" / 150mm.



**AV-061**

**Fragment Extraction Forceps**

Root fragment forceps are ideal for extracting mobile broken root fragments and small, delicate teeth. The grooved and serrated jaws assist with grasping fragments. 5 1/2" / 138mm.



Instruments Specially Designed for Felines and/or Very Small Dogs



**Straight Tip Elevators**

These super slim elevators are excellent for removing teeth in cats and small dogs. They are also useful in retrieving fractured roots. Tips can be sharpened using a dental stone.



**Elevator 1mm**

1mm wide straight tip elevator with stubby handle.

**Elevator 2mm**

2mm wide straight tip elevator with stubby handle.



**Probe/Explorer**

The probe end has periodontal markings etched in black. The fine but robust tip is ideal for periodontal probing in cats or dogs. The markings will not fade even after many autoclave cycles. The other end of the probe has a shepherd hook explorer to detect tooth defects both supra and subgingivally.



**Very Fine Periosteal Elevator**

Double ended elevator. The small delicate flat ends of this instrument make it ideal for raising gingival flaps in cats. The rounded tip helps prevent accidental slippage and tearing of the gingival flap.



**Resorptive Lesion Probe**

This probe can be used to detect resorptive lesions or residual calculus subgingivally. The probe can also be used to identify furcation involvement (loss of alveolar bone between tooth roots).



**Sickle Scaler**

This double ended hand instrument is used for the removal of supragingival (above the gum) plaque/calculus and stains.



**Curette**

This slimline curette is ideal for calculus and plaque removal both supra and subgingivally (above and below the gum). The fineness of the instrument is well suited for use in cats and small dogs.



**Alvi Extraction Forceps**

Extraction forceps - small. These fine extraction forceps are designed to grasp small teeth. The spring action allows their use without excessive force being applied to the tooth crown. 125 mm

**AV-062**

Instruments mentioned on this page are available as a set .





**Curved Deciduous Elevators**

The curved deciduous elevators are ideal for the removal of retained canines (milk teeth) and are available in three sizes suitable for the different sized deciduous teeth encountered.

The sharp elevator end cuts the PDL whilst the curve of the elevator tip follows the mesial curve and the other end the distal curve of the root. Curved deciduous elevators make the removal of retained teeth quick and easy because they follow the curve of the root.

**AV-063**  
Curved Deciduous Elevator – Small (2mm)



**AV-064**  
Curved Deciduous Elevator – Medium (3mm)



**AV-065**  
Curved Deciduous Elevator – Large (4mm)



**AV-066**  
Molt Periosteal Elevator – No. 9

The rounded edge of the periosteal instrument minimise the tearing of tissue when lifting the gum flap. The sharp end makes the initial lifting of the flap easier. Suitable for medium to large dogs.



**AV-067**  
Small Dog or Cat Right Angle Extraction Forceps

Designed by iM3 for easier extraction of cat, small dog and deciduous teeth. Parallel right angle jaws reduce the risk of tooth fracture during extraction. By not meeting at the end, they reduce the risk of breaking off cats teeth. Small handles provide a more tactile feel.



**Instrument Sets**

Alvi Instrument sets take the guess work out of choosing the correct dental instrument. Alvi instruments are used throughout the world in teaching wetlabs and have been developed with the help of veterinary dental specialists. Made from high quality stainless steel, these instruments meet the needs of the modern day veterinarian.

**MV-068**

**Alvi 5 Piece Specialized Instrument Set**

The set is intended as a supplement to ordinary tooth extraction sets. The curved deciduous elevators are ideal for the removal of retained canines (milk teeth). Each instrument is available individually.

The set consists of:

- Molt Periosteal Elevator - No 9
- Curved Deciduous Elevator - small
- Curved Deciduous Elevator - medium
- Curved Deciduous Elevator - large
- Extraction Forceps, right angled jaw



**MV-069**

**Alvi 14 Piece Instrument Set, Standard Handle Elevators**

The set consists of:

- Winged elevators Size 1-5mm
  - Straight root tip pick
  - Tartar Removing Forceps
  - Extraction Forceps
  - Minnesota Retractor
  - Subgingival Curette
  - Jaquette Supragingival Scaler
  - Sickle Scaler
  - Explorer / Measuring Probe
  - Double ended Periosteal Elevator
- Each instrument is available individually



**MV-070**

**Alvi 14 Piece Instrument Set, Stubby Handle Elevators**

The set consists of:

- Winged elevators Size 1-5mm
  - Straight root tip pick
  - Tartar Removing Forceps
  - Extraction Forceps
  - Minnesota Retractor
  - Subgingival Curette
  - Jaquette Supragingival Scaler
  - Sickle Scaler
  - Explorer / Measuring Probe
  - Double ended Periosteal Elevator
- Each instrument is available individually



**MV-071**

**Alvi Feline 8 Piece Instrument Set**

The feline periodontal kit has been designed exclusively for use in cats and small dogs. Its design allows the practitioner to perform a complete oral examination (including detection of feline resorptive lesions) and cleaning of all tooth surfaces – both supra and subgingivally. All instruments are available individually.

The set consists of:

- 1 mm Wide Straight Tip Elevator,
- 2 mm Wide Straight Tip Elevator
- Probe/Explorer
- Extraction Forceps
- Periosteal Elevator
- Resorptive Lesion Probe
- Sickle Scaler and Curette.



**AV-072**

**Alvi 4 Piece Winged Elevator Set**

Alvi Winged Elevator sizes 1-4 mm in standard handle, supplied in a black pouch.  
Each elevator is available individually.

Standard Handle Set



**AV-073**

**Alvi 4 Piece Winged Elevator Set**

Alvi Winged Elevator sizes 1-4 mm in stubby handle, supplied in a black pouch.  
Each elevator is available individually.

Stubby Handle Set



**AV-074**

**Alvi 6 Piece Winged Elevator Set**

Alvi Winged Elevator sizes 1-6 mm in standard handle, supplied in a black pouch.  
Each elevator is available individually.

Standard Handle Set



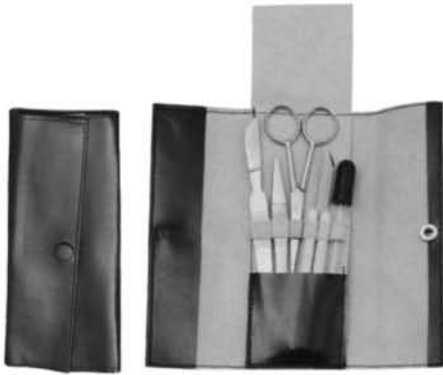
**AV-075**

**Alvi 6 Piece Winged Elevator Set**

Alvi Winged Elevator sizes 1-6 mm stubby (shorter length and larger diameter) handle. The stubby handle makes extraction so much safer as the user's finger can be placed at the instrument tip. The new handle design is ideal for small or large hands. Supplied in a black pouch. Each elevator is available individually.

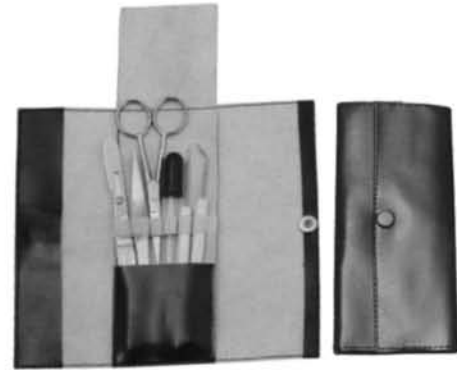
Stubby Handle Set





**AV-076**  
**Basic Dissecting Set**

A Collection of Instruments For Introductory Dissection vinyl pouch  
Scalpel 6" Scissors 4 1/2" Forceps student grade 4 1/2"  
Straight needle in Wooden Handle Bent needle in wooden handle  
Medicine Droppers.



**AV-077**  
**Dissecting Set**

Beginners For Elementary Junior High Or High School Life Science  
Vinyle pouch Scissors Forceps student /Scalpel with Replaceable  
blade Straight needle in wooden handle Bent needle in wooden  
handle Medicine dropper



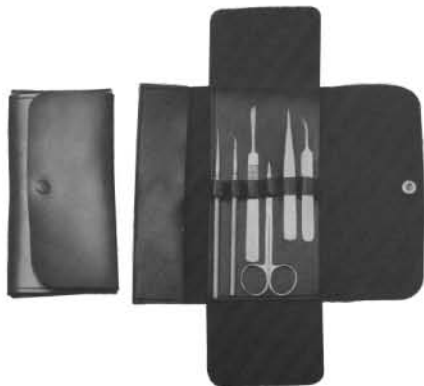
**AV-078**  
**General Biology Dissecting Set**

Designed for work in general biology good Quality instruments  
scissor student Forceps fine point 4 1/2" S/S  
Scalpel 1 1/2 Blade ( with G pin S/S )  
Straight Needle with wooden handle Medicine Dropper  
single fold leatherette case.



**AV-079**  
**Fine Dissecting Set**

Designed for Freshman Courses in Biology  
Scissors Fine point 4 1/2" Forceps fine point with g pin 4 1/2"  
Scalpel replaceable Blade Teasing Needle Str  
Teasing Needle Cvd Medicine Dropper  
Single Fold Leatherette Case.



**AV-080**  
**Intermediate Dissecting Set**

Contains high quality instruments recommended for advance  
biology courses . Scissor surgical 4 1/2" Forceps fine point 4 1/2"  
Surgeon scalpels (with # 22 blade) Teasing needle plastic handle Str  
Teasing needle Cvd Plastic handle Mall probe and seeker  
Medicine dropper Single fold leatherette case



**AV-081**  
**Tissue Culture Dissecting Set**

Features Stainless Steel Instrument in leatherette case  
Scissors M/Dissecting Iris 4 1/2" Forceps watchmaker 4 1/4" Str  
Forceps watchmake 4 1/4" Cvd Scalpel micro dissecting 5"  
18x3 mm blade Teasing Needle Str S/S Teasing Needle Cvd S/S  
Single Fold leatherette case



**AV-082**

**Anatomy Dissecting set**

A complete set Detailed Dissection for more advanced work in zoology and comparative anatomy .  
 Surgical scissors 5 ½". Fine point scissors 4 ½"  
 Forceps fine point Cvd 4 ½" Thumb forceps superior 5"  
 Scalpel 1 ½" Blade .  
 Cartilage knife/Flexible Probe. Triple chain Hook/Mall probe.  
 Needle wooden handle Str. Needle wooden handle Str  
 Medicine Dropper. Double fold leatherette case



**AV-083**

**Graduate Dissecting Set**

Design for the biology graduate students  
 Surgical scissors 5 ½". Fine point scissors 4 ½".  
 Forceps fine point Str 4 ½" Forceps fine point Cvd 4 ½".  
 Tripple chain hook. cartilage knife scalpel stain finish 1 ½" blade  
 forceps cartilage 5" 2 needle holder with straight needle .  
 Flexible probes. Probes with hook. Probe & seeker  
 Dropping Pipe Double Fold Leatherette case



**AV-084**

**Micro Dissecting Set**

Feature stainless steel Instruments in Leatherette case.  
 Scissors M/Dissecting Iris 4 ½" Scissors sharp point Iris 4 ½"  
 Forceps Micro Dissecting 4 1/4" Straight Forceps micro dissecting 4"  
 Curved Scalpel micro dissecting 18 x 3 mm blade  
 scalpel micro dissecting 30 x 3 mm blade Dissecting needle Str .  
 Dissecting needle Cvd. Dissecting needle Full-Spear point  
 Dissecting needle Half-Spear point In double folding case.



**AV-085**

**Large Animal set**

This set provide all the Necessary instruments Dissection of large Animal such as Cat, Shark and Rabbits Scissor surgical 5 ½" D/Scissors superior 4 ½" Scissors fine point Str 4 ½" Forceps large Tissue 1x2 teeth 6" Forceps utility Cvd point 6" . Forceps fine point str 4 ½" Scalpel screw Lock with # 22 blade . Knife cartilage 6 ½" . Probe sharp point angular. Section lifter S/S Teasing needle Str Wooden handle. Teasing Needle Cvd Wooden handle Medicine dropper.



**AV-086**  
**RANGE OF SPATULAS**  
 7 parts filled, in a case with press stud  
 Content  
 1 straight blunt tweezers, 145 mm  
 1 micro double spatula, 150/4 mm  
 1 double spatula, 150/9 mm  
 1 micro-powder spatula, 150/4 mm  
 1 powder spatula, 150/9 mm  
 1 micro-spoon spatula, 150/5 mm  
 1 micro-spoon spatula, 150/7 mm



**AV-087**  
**Jewellery Forceps Set**



**AV-088**  
**DISSECTING SET**  
 6 parts or 12 parts filled, in pouch  
 Content  
 1 powder spatula, 150/9 mm  
 1 straight scissors, 100 mm  
 1 spoon spatula, 150 mm  
 1 scalpel 125 mm  
 1 flexible section lifter, 150 mm  
 1 pointed tweezers, 130 mm



**AV-089**  
**Needle Set**

**AV-090**  
**BOWMAN LACRIMAL PROBES**  
 Double Ended, Sterling Silver



Bowman Probe, Bowman Probe, Bowman Probe, Bowman Probe, Bowman Probe, Bowman Probe,  
 000-0000 00-0 1-2 3-4 5-6 7-8

**AV-091**  
**WILLIAM LACRIMAL PROBES**  
 Double Ended, Sterling Silver



William Probe, William Probe, William Probe, William Probe, William Probe, William Probe,  
 000-0000 00-0 1-2 3-4 5-6 7-8



**AV-092**  
Fish Aquarium Set



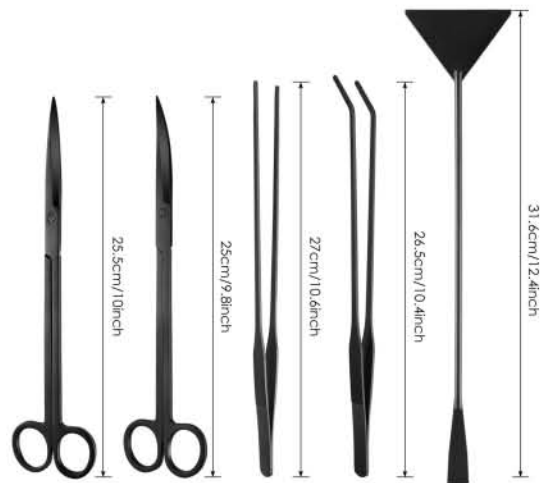
**AV-093**  
Fish Aquarium Set



**AV-094**  
Fish Aquarium Set



**AV-095**  
Fish Aquarium Set



**AV-096**  
Fish Aquarium Set



**AV-097**  
Fish Aquarium Set



AV-098



AV-099



AV-100



AV-101



AV-102  
Dissection Premium Kit

**AV-103**

**DRESSING SET - 8 PIECES**

- Kidney Dish 20 cm (8") - medium
- Gallipot 150 ml - 6 oz - medium
- Kocher artery forceps - straight - 16 cm
- Dressing Forceps (Thumb) - 16 cm
- English TOE dissecting forceps - plain - 14 cm
- Mayo scissors - straight - 15 cm
- Rampléy sponge holding forceps - str. - 18 cm
- Instrument tray with lid 25x30x6.2 cm



**AV-104**

**SUTURE SET - 12 PIECES**

- Kidney Dish 20 cm (8") - medium
- Gallipot 150 ml - 6 oz - medium
- Mayo Hegar needle holder - 18 cm
- Kocher artery forceps - straight - 16 cm
- Kocher artery forceps curved - 16 cm
- Dressing Forceps (Thumb) - 16 cm
- English TOE dissecting forceps - plain - 14 cm
- Dissecting forceps toothed 1x2 - 14 cm
- Suture scissors - Heaths Ligature - 15 cm
- Mayo scissors - straight - 15 cm
- Rampléy sponge holding forceps - str. - 18 cm
- Instrument tray with lid 30x20x5 cm



**AV-105**

**MINOR DELIVERY SET - 25 PIECES**

- Kidney Dish 20 cm (8") - medium
- Kidney Dish 25 cm (10") - large
- Gallipot 150 ml - 6 oz - medium
- Brown Sadler episiotomy scissors - 14 cm
- Kocher artery forceps - straight - 16 cm
- Kocher artery forceps straight - 18 cm
- Kocher artery forceps curved - 16 cm
- English TOE dissecting forceps - plain - 14 cm
- English TOE dissecting forceps - plain - 18 cm
- Dissecting forceps toothed 1x2 - 14 cm
- Operating scissors sharp/blunt - straight - 15 cm 2 pcs.
- Operating scissors sharp/blunt - curved - 15 cm 2 pcs.
- Rampléy sponge holding forceps - str - 24 cm 2 pcs.
- Museux Vulsellum forceps 8 mm - str. - 24 cm
- Cusco vaginal specula - small
- Cusco vaginal specula - medium
- Cusco vaginal specula - large
- Sims vaginal specula - small
- Sims vaginal specula - medium
- Sims vaginal specula - large
- Umbilical scissors USA Patent - 10.5 cm
- Instrument tray with lid 45x30x6.2 cm





**AV-106**  
 PROBE  
 BUTTERFLY PROBE  
 STRAIGHT BLADE  
 POT-BELLIED BLADE  
 ANATOMY FORCEPS  
 SURGERY FORCEPS  
 HOOK SHARP  
 FORCEPS THIN END  
 SCISSORS BLUNT/SHARP



**AV-107**  
 PROBE  
 BUTTERFLY PROBE  
 STRAIGHT BLADE  
 POT-BELLIED BLADE  
 ANATOMY FORCEPS  
 SURGERY FORCEPS  
 KLEMMER FORCEPS  
 STITCH REMOVER  
 FORCEPS THIN END  
 SCISSORS BLUNT/SHARP  
 MATHIEU NEEDLE HOLDER



**AV-108**  
 PROBE  
 BUTTERFLY PROBE  
 STRAIGHT BLADE  
 POT-BELLIED BLADE  
 ANATOMY FORCEPS  
 SURGERY FORCEPS  
 STITCH REMOVER  
 FORCEPS THIN END  
 SCISSORS BLUNT/SHARP  
 MAYO-HEGAR HOLDER



**AV-109**  
 PROBE  
 BUTTERFLY PROBE  
 STRAIGHT BLADE  
 POT-BELLIED BLADE  
 ANATOMY FORCEPS  
 SURGERY FORCEPS  
 KLEMMER FORCEPS  
 STITCH REMOVER  
 FORCEPS THIN END  
 SCISSORS BLUNT/SHARP  
 MATHIEU NEEDLE HOLDER



**AV-110 Set of chrome plated Hegar Dilators**  
Include 14 dilators Ø 4-17 mm

Sims hystrometer - malleable -  
33 cm - silver

Bosch/Sims scissors - 23 cm

Schroeder forceps - 25 cm  
(Pozzi-Palmer)

Foerster forceps - 25 cm

26810 GYNAECOLOGY KIT  
Includes 4 instruments marked  
with in a nylon bag.



# ALVIEXPO

**Manufacturers & Exporters of Veterinary Instruments**

Industrial Estate Daska Road, Opposite Sialkot  
Medical College Sialkot Pakistan

WhatsApp +92-332-8638800 / +92-310-7186560

alvi@skt.comsats.net.pk alviexpo@gmail.com

www.alviexpo.com

