

AV-047

DENTAL PACK SET

- A Winged Elevators
- B Dental Extracting Forceps
- C Root Elevator 76N
- D Explorer D/E
- E Curettes Columbia 13-14
- F Curettes Columbia 4L-4R
- G Scaler, Jacquette 2S-3S
- H Periosteal Elevator
- I T/c N/Holder



AV-048

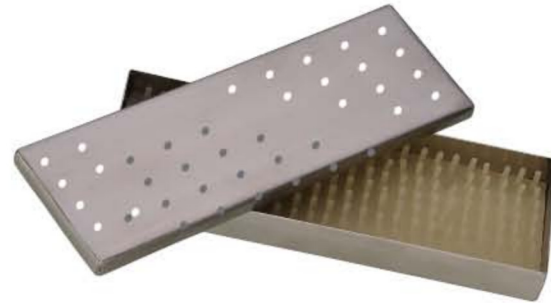
RODENT PACK SET

- A Mouth Gag
- B Check Retractors
- C Tooth Cutter
- D Tooth Extracting Forceps
- E Spatula
- F Molar Luxator 3mm
- G Incisor Luxator 5mm
- H Currettes



Veterinary Winged Dental Elevators

Alvi winged elevators are light-weight yet extremely durable. The sharp, tapered winged tip allows easy insertion into the PDL. The width of the winged tips have been shaped to match the size and shape of the tooth's root structure (sizes 1-6 mm). This unique winged shape increases control of the instrument and provides additional leverage to aid in extraction of the tooth.



AV-049

Alvi Winged Elevators with Standard Handle

Winged Elevator 1mm



Winged Elevator 2mm



Winged Elevator 3mm



Winged Elevator 4mm



Winged Elevator 5mm



Winged Elevator 6mm



Straight Root Tip Pick

Used for assisting with extraction of retained root tips or root fragments.
Straight Root tip pick - stubby handle



Periosteal Elevator

Used for elevating the muco-periosteal flap during extractions on large breed dogs.
Periosteal Elevator - stubby handle



Alvi Winged Elevators with Stubby Handle

The stubby handle elevators available as a 6 pc. set. See page 16

Winged Elevator 1mm



Winged Elevator 2mm



Winged Elevator 3mm



Winged Elevator 4mm



Winged Elevator 5mm

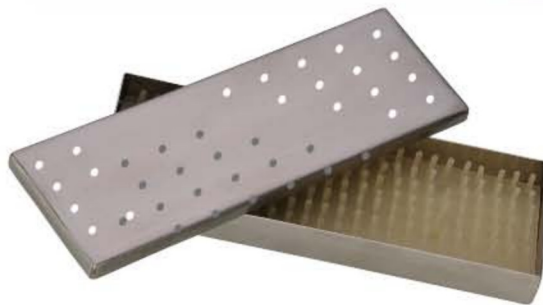


Winged Elevator 6mm



AV-050

6 pc Stubby Handle Set includes stainless steel instrument holder/case



AV-051 5pc Luxator instrument set (1-5mm Stubby)

1mm Luxator (Stubby Handle)



2mm Luxator (Stubby Handle)



3mm Luxator (Stubby Handle)



4mm Luxator (Stubby Handle)



5mm Luxator (Stubby Handle)



Alvi Luxators

Alvi Luxators, sizes 1-5mm are very fine and sharp. The 5 sizes allow their use for both feline and Canine teeth. They are used and recommended by dental specialist's for cutting the periodontal ligament and expanding the alveolus (tooth Socket) and are ideal for incisors and crowded teeth.

The stubby (shorter length and larger diameter) handle makes extraction so much safer as the users fingers can be placed at the instrument tip. Luxators are not elevators, we recommend winged elevators are used to elevate and extract the tooth.



AV-052

Explorer/Measuring Probe

The probe end has periodontal markings etched in black. The fine but robust tip is ideal for periodontal probing in cats or dogs. The markings will not fade even after many autoclave cycles. The other end of the probe has a shepherd hook explorer to detect tooth defects both supra and subgingivally.



AV-053

Double Ended Periosteal Elevator

The periosteal elevator is used to lift a muco-periosteal flap off the bone when performing surgical extractions. The fine double-ended 2/4 periosteal elevator is great for cats and small to medium dogs.



AV-054

Sickle Scaler

This scaler is used to remove plaque and calculus from the tooth surface. The sickle scaler tip can be used to remove calculus from the developmental grooves and blood grooves in canine teeth.



AV-055

Jaquette Supragingival Scaler

(Above the gum) The scaler is used to remove plaque and calculus from the tooth surface. It works well in tight occlusal spaces.



AV-056

Subgingival Curette

(Below the gum) The curette is used to clean plaque and calculus from the tooth root surface.



AV-057

Minnesota Retractor

Used to lift and protect the tissue and the user when performing surgical extractions whilst operating the high speed drill. One end holds the cheek back and the other holds the tongue down, a multi purpose retractor.



AV-058

Tartar Removing Forceps

The curved beak of the forceps allow for easy removal of heavy calculus from the tooth surface, decreasing the chance of fracturing the tooth.



AV-059

Extraction Forceps

Extraction forceps are used to grasp the tooth and remove from the socket after it is loosened. The small size and spring in the handle helps prevent excessive force and the risk of breaking the tooth. Overall length 125mm (5").



AV-060

Root Tip Extraction Forceps

Root tip extraction forceps have grooved tips with fine curved ends that meet when closed. They are ideal for root extraction or as an alternative to regular extraction forceps (D1012). 6" / 150mm.



AV-061

Fragment Extraction Forceps

Root fragment forceps are ideal for extracting mobile broken root fragments and small, delicate teeth. The grooved and serrated jaws assist with grasping fragments. 5 1/2" / 138mm.



Instruments Specially Designed for Felines and/or Very Small Dogs



Straight Tip Elevators

These super slim elevators are excellent for removing teeth in cats and small dogs. They are also useful in retrieving fractured roots. Tips can be sharpened using a dental stone.



Elevator 1mm

1mm wide straight tip elevator with stubby handle.



Elevator 2mm

2mm wide straight tip elevator with stubby handle.



Probe/Explorer

The probe end has periodontal markings etched in black. The fine but robust tip is ideal for periodontal probing in cats or dogs. The markings will not fade even after many autoclave cycles. The other end of the probe has a shepherd hook explorer to detect tooth defects both supra and subgingivally.



Very Fine Periosteal Elevator

Double ended elevator. The small delicate flat ends of this instrument make it ideal for raising gingival flaps in cats. The rounded tip helps prevent accidental slippage and tearing of the gingival flap.



Resorptive Lesion Probe

This probe can be used to detect resorptive lesions or residual calculus subgingivally. The probe can also be used to identify furcation involvement (loss of alveolar bone between tooth roots).



Sickle Scaler

This double ended hand instrument is used for the removal of supragingival (above the gum) plaque/calculus and stains.



Curette

This slimline curette is ideal for calculus and plaque removal both supra and subgingivally (above and below the gum). The fineness of the instrument is well suited for use in cats and small dogs.



Alvi Extraction Forceps

Extraction forceps - small. These fine extraction forceps are designed to grasp small teeth. The spring action allows their use without excessive force being applied to the tooth crown. 125 mm

AV-062

Instruments mentioned on this page are available as a set .





Curved Deciduous Elevators

The curved deciduous elevators are ideal for the removal of retained canines (milk teeth) and are available in three sizes suitable for the different sized deciduous teeth encountered.

The sharp elevator end cuts the PDL whilst the curve of the elevator tip follows the mesial curve and the other end the distal curve of the root. Curved deciduous elevators make the removal of retained teeth quick and easy because they follow the curve of the root.

AV-063
Curved Deciduous Elevator – Small (2mm)



AV-064
Curved Deciduous Elevator – Medium (3mm)



AV-065
Curved Deciduous Elevator – Large (4mm)



AV-066
Molt Periosteal Elevator – No. 9

The rounded edge of the periosteal instrument minimise the tearing of tissue when lifting the gum flap. The sharp end makes the initial lifting of the flap easier. Suitable for medium to large dogs.



AV-067
Small Dog or Cat Right Angle Extraction Forceps

Designed by iM3 for easier extraction of cat, small dog and deciduous teeth. Parallel right angle jaws reduce the risk of tooth fracture during extraction. By not meeting at the end, they reduce the risk of breaking off cats teeth. Small handles provide a more tactile feel.

